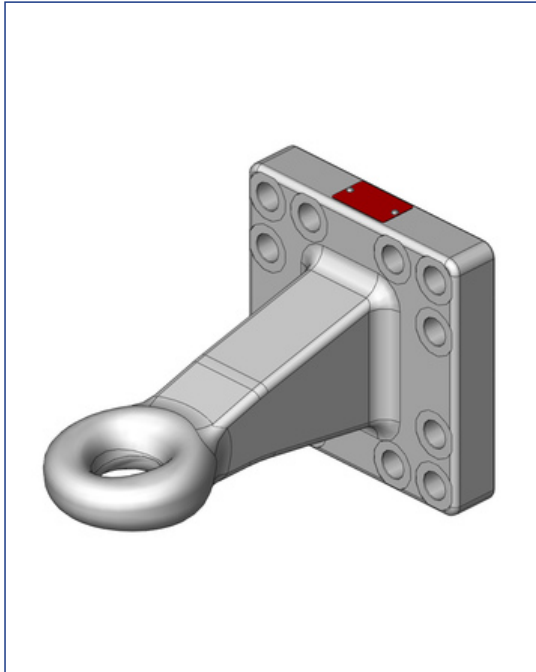


**Art.Nr. 00.665.42.0-A02 | Towing Eyes | Flange**



Ring Towing Eye DØ50mm rigid (Pickup Hitchring)




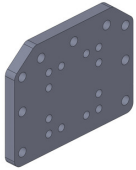

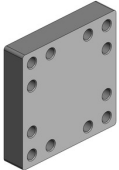
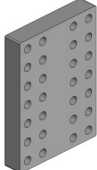
Alternative color

00.665.42.0-A02 (Black )

Technical Values\*

**Flange Hole Pattern (mm):** 160x160 | **Thread:** M20 | **Hole Pattern Holes:** 12 |  
**Flange Alignment:** Vertical | **Working Length (mm):** 250 | **Max. Permissible D-Value (kN):** 102,4 | **Max. Permissible Vertical Load (kg):** 3000

**Attachments**

<p><b>Art.Nr. 10.731.003.0</b> Anti-Theft Locks</p> 	<p><b>Art.Nr. 00.950.30.0</b> Screw Sets</p> 	<p><b>Art.Nr. 00.645.17.9</b> Screw-On Plates</p> 	<p><b>Art.Nr. 00.645.310.0</b> Screw-On Plates</p> 	<p><b>Art.Nr. 00.645.60.0</b> Screw-On Plates</p> 
<p><b>Art.Nr. 00.645.13.0</b> Weld-On Plates</p> 	<p><b>Art.Nr. 00.645.14.0</b> Weld-On Plates</p> 	<p><b>Art.Nr. 00.645.140.0</b> Weld-On Plates</p> 